



# St. Joseph Church Transition Conference Executive Summary

---

02/01/2010

## Gender and Catholic Identity

- 137 total people completed some/all of the survey. Of those 66 respondents were female compared to only 56 Male.
- 118 identify themselves as “Active Catholics” and eight (8) identify as “Inactive Catholics”.

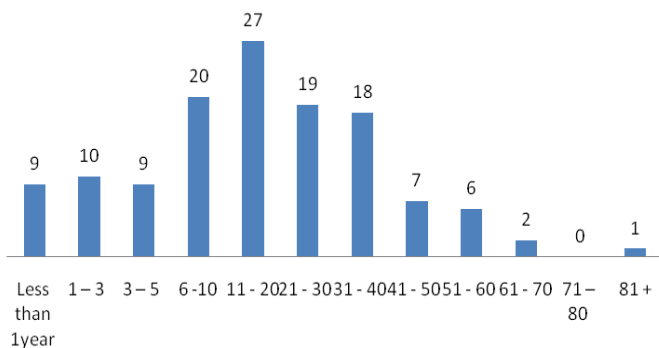
## Marital Status

- 79 were “Married”
- 21 were “Widowed”
- 13 were “Single, Never Married”
- 8 were “Unmarried, cohabiting”
- 3 are “Divorced and remarried”
- 1 is “Separated”
- 1 is “Widowed and remarried”
- 1 is “Divorced”
- 89 of the respondents who are currently married had their marriage blessed by a Catholic priest compared to only 13 who have not.

## Racial / Ethnic Identity

- 107 White/Anglo/Caucasian
- 3 American Indian
- 2 Alaska Native
- 2 Asian/Pacific Islander
- 1 Other
- 0 Black/African American
- 0 Hispanic/Latino

Number of Years Attending the Parish



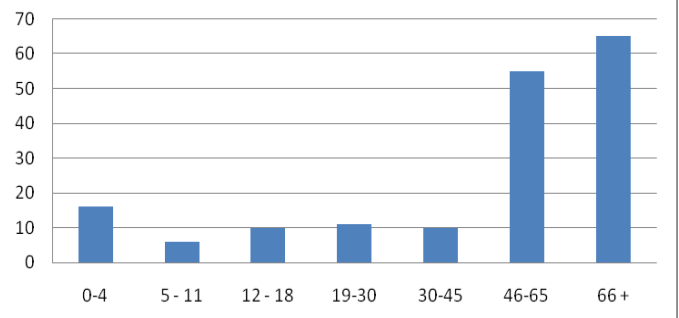
## Mass Attendance

- 69 Respondents attend mass every week
- 29 “Almost every week”
- 18 respondents attend mass more than once a week, and
- 6 respondents attend mass a “few times a year or never/rarely”;
- 4 attend once or twice a month.
- 50 attend Saturday 5:00 p.m. mass
- 36 attend Sunday 11:00 a.m. mass
- 31 attend Sunday 8:00 a.m. mass

## Youth and Adult Education

- Only 26 respondents had children attend Religious Education Classes (PSR) in the past five (5) years compared to 85 who have not.
- 44 respondents have attended adult religious education (Adult Faith Formation) classes within the past five (5) years compared to 77 who have not.

Number of People In Household by Age Range



## St. Joseph Church Transition Conference: Executive Summary

### Employment

- |   |   |
|---|---|
| <ul style="list-style-type: none"> <li>• 66 Retired or semi-retired</li> <li>• 31 Employed full-time</li> <li>• 8 Homemaker</li> <li>• 4 Self-employed</li> </ul> | <ul style="list-style-type: none"> <li>• 3 Employed part-time</li> <li>• 2 Caring for grandchildren</li> <li>• 1 Unemployed</li> <li>• 0 Student</li> </ul> |
|---|---|

### Household Income

- |  |  |
|--|--|
| <ul style="list-style-type: none"> <li>• 26 endorsed less than \$20,000</li> <li>• 21 endorsed \$20,000-39,999</li> <li>• 20 endorsed \$40,000-59,999</li> <li>• 9 endorsed \$60,000-79,999</li> </ul> | <ul style="list-style-type: none"> <li>• 10 endorsed \$80,000-99,999</li> <li>• 10 endorsed \$100,000-119,999</li> <li>• 4 endorsed \$120,000-139,999</li> <li>• 8 endorsed \$140,000 or more</li> </ul> |
|--|--|
- 117 regularly contribute financially to St. Joseph while only nine (9) do not.

### Average Scores

<b>Parish Leadership, Communication and Planning</b>	Average	Agree (Selected 4 or 5)	Disagree (Selected 1 or 2)	Sample Size
I believe I can make a positive difference at St. Joseph	3.61	59.6%	5.1%	136
The Pastoral Council is responsive to input from the Parish community	3.16	33.3%	17.0%	135
There is a culture of accepting change as healthy and non-threatening	3.09	35.1%	23.9%	134
There is adequate planning of business-related objectives	2.99	26.1%	23.9%	134
I understand the long-term goals of St. Joseph	2.89	29.3%	36.1%	133
Innovation and risk taking are practiced and encouraged.	2.87	16.3%	24.4%	135
Adequate mechanisms exist for communication between the Pastoral Council and the Congregation	2.85	25.0%	34.6%	136
Leaders have a long term view and communicate it	2.81	28.1%	40.0%	135
The purposes and rationales behind major decisions are communicated clearly and in a timely manner	2.73	25.7%	47.8%	136
There is a free flow of information throughout the Parish	2.70	26.1%	48.6%	138

<b>Decision Making</b>	Average	Agree (Selected 4 or 5)	Disagree (Selected 1 or 2)	Sample Size
Interpersonal conflicts often interfere with our parish's ability to make decisions effectively	3.15	27.1%	11.3%	133
There is effective use of teams (task forces, committees, etc) to solve problems and make decisions	3.07	34.6%	25.7%	136
Decisions are made at the level where the best information is available	2.99	25.4%	23.9%	134
Decisions, new projects, innovations etc. are implemented in a timely manner with solid communication	2.66	21.9%	48.9%	137

## St. Joseph Church Transition Conference: Executive Summary

<b>Problem Solving</b>	<b>Average</b>	<b>Agree (Selected 4 or 5)</b>	<b>Disagree (Selected 1 or 2)</b>	<b>Sample Size</b>
Short term thinking often compromises the long term goals and vision	3.46	57.1%	12.0%	133
When disagreements occur, people work hard to find a "win-win" solution	3.10	27.5%	13.7%	131

<b>Our Parish</b>	<b>Average</b>	<b>Agree (Selected 4 or 5)</b>	<b>Disagree (Selected 1 or 2)</b>	<b>Sample Size</b>
Our worship services, including music, are inspirational and well done	3.94	81.3%	11.5%	139
Our leaders, laity and clergy, display a spirit of humility and service	3.88	80.1%	7.4%	136
Our Parish has an organized hospitality ministry that is predictable, stable, and effective	3.75	71.0%	13.0%	138
Our Parish provides opportunities for Bible studies in various ways and for different age groups	3.72	70.8%	9.5%	137
Our congregation values Christian education/formation and that is demonstrated through our ministry offerings	3.69	70.1%	8.8%	137
Our Parish knows, articulates, and affirms its God-given mission	3.67	69.4%	9.7%	134
Most members believe that this Parish's best days are in the future	3.58	56.6%	8.1%	136
The members of this Parish understand and practice Christian stewardship	3.54	63.2%	12.5%	136
We clearly define the responsibilities of all persons in lay ministry in our congregation	3.49	59.6%	16.2%	136
This Parish has intentionally assessed the needs of our congregation and offers quality ministries and offerings to address those needs	3.43	57.7%	18.2%	137
We cultivate a strong sense of unity in our Parish	3.33	49.6%	21.1%	133
Our Parish provides appropriate fellowship opportunities before/after Sunday services	3.30	52.5%	23.0%	139
Our Parish has adequate facilities for our needs now and in the foreseeable future	3.18	47.8%	30.9%	136
Our Parish has well developed programs to attract youth and young families	3.15	45.3%	28.8%	139
Our congregation provides activities, opportunities targeted to non-members in the wider community	2.96	32.4%	28.7%	136

<b>I am satisfied with the following general areas</b>	<b>Average</b>	<b>Agree (Selected 4 or 5)</b>	<b>Disagree (Selected 1 or 2)</b>	<b>Sample Size</b>
Masses and liturgies	4.18	89.1%	5.8%	138
Efforts to encourage parishioners to share their time and talent with the parish	3.46	58.3%	19.4%	139
Strong sense of community within parish	3.39	54.0%	18.2%	137
Social activities	3.36	51.1%	16.1%	137
Condition of St. Joseph Parish facilities	3.24	54.7%	31.7%	139

## St. Joseph Church Transition Conference: Executive Summary

<b>I am satisfied with the following areas</b>	<b>Average</b>	<b>Agree (Selected 4 or 5)</b>	<b>Disagree (Selected 1 or 2)</b>	<b>Sample Size</b>
Homilies relating Scripture to your daily life	4.07	81.0%	1.5%	137
Readers/Lectors	4.04	88.4%	5.1%	138
Music	3.91	79.6%	13.9%	137
Seasonal liturgical decorations	3.90	77.8%	8.1%	135
Youth Ministry (grades 7-12).	3.79	61.7%	3.1%	128
RCIA (Rite of Christian Initiation of Adults).	3.74	63.4%	0.0%	131
Children's Religious Education PreK-12 (PSR).	3.70	59.8%	3.1%	127
Bible study	3.68	65.7%	3.7%	134
Biblical study and interpretation	3.67	58.8%	3.8%	131
Personal prayer and spirituality	3.67	58.6%	3.8%	133
Preparation for First Reconciliation/Eucharist	3.65	56.5%	0.0%	131
Preparation for Confirmation	3.62	55.0%	1.6%	129
Opportunities for Eucharistic Adoration	3.60	66.2%	6.2%	130
Hospitality or sense of welcome	3.59	67.2%	16.1%	137
Penance services	3.59	56.6%	3.7%	136
Marriage Preparation	3.51	46.0%	3.2%	126
Preparation for Infant Baptism	3.47	44.2%	2.3%	129
Growing in Faith (the monthly bulletin insert)	3.35	39.5%	4.8%	124
Opportunities to worship in native language	3.34	36.6%	16.0%	131

<b>I would like to personally learn more about the following topics</b>	<b>Average</b>	<b>Agree (Selected 4 or 5)</b>	<b>Disagree (Selected 1 or 2)</b>	<b>Sample Size</b>
Disability-friendly facilities	3.84	72.3%	8.0%	137
Relating the Scriptures to current events	3.77	68.2%	3.0%	132
Background information on the Sunday Scripture readings	3.73	64.4%	3.0%	132
Issues of social justice and equality	3.64	54.1%	5.3%	133
Conscience formation and values	3.61	59.8%	5.3%	132
Basic teachings of the Catholic Parish	3.59	56.2%	4.6%	130
Pro-life issues	3.46	45.5%	6.1%	132
Sexual morality	3.41	43.2%	6.8%	132
The current proposal to renovate the church	3.20	45.1%	30.8%	133
Additional multipurpose space for meetings, classes, activities and functions	3.19	45.3%	29.9%	137

## Identifying Priorities

<b>Proposed completion within 90 days</b>	<b>Selected 90 Days or 6 Months</b>	<b>Selected 3 Years or This is Not Important</b>	<b>Sample Size</b>
Determine “who” is the group that has final decision making authority over the Capitol Campaign proposed project.	69.5%	4.6%	131
Identify ways to become a more welcoming congregation; begin to change our current culture.	64.6%	20.0%	130
Host a minimum of one (but more are encouraged) Capitol Campaign Town Hall Meetings.	64.6%	15.4%	130
Have Parish Town Hall Meetings where the Parish Financials are openly shared – true transparency.	62.9%	6.1%	132
Explain to the congregation the “Organizational Structure” of St. Joseph. Hand out an Organizational Chart (perhaps even including committees and their reporting structure).	53.4%	13.0%	131
Send Parish-Wide Survey to all Registered Adults (two surveys per married couple).	48.8%	23.6%	127
Conduct a Safety & Health Environmental Analysis.	38.9%	31.7%	126

<b>Proposed completion within Six (6) Months</b>	<b>Selected 90 Days or 6 Months</b>	<b>Selected 3 Years or This is Not Important</b>	<b>Sample Size</b>
Analyze the data from the All-Family Survey and Communicate results to the parish.	88.4%	3.1%	129
Identify a way to take the “pulse of congregation”.	66.9%	10.2%	127
Assess what specific efforts are being made to change our culture to be a warm, friendly and welcoming community.	65.2%	12.1%	132
Identify (and be able to see) repairs and improvements on existing facilities.	60.6%	9.8%	132
Have a clear plan and decision making process on the Capital Campaign and then move forward. This plan must ensure that members of the congregation are informed and are kept informed of the progress.	59.5%	11.5%	131
Host some type of Parish Mission or Revival or Social designed to foster growth as a faith family.	46.1%	12.5%	128

**St. Joseph Church Transition Conference: Executive Summary**

<b>Proposed completion within One (1) Year</b>	<b>Selected 90 Days or 6 Months</b>	<b>Selected 3 Years or This is Not Important</b>	<b>Sample Size</b>
Have and execute a plan for increased communication.	62.8%	5.4%	129
Have and execute a plan for transportation (elderly, sick and homebound, Youth Ministry).	54.6%	10.0%	130
Ensure that handicap bathrooms are available in the church (regardless if the Capital Campaign is implemented).	46.5%	16.5%	127
Form a committee that will examine and implement the ministry of inclusion and cohesion.	36.0%	27.2%	125
Have and execute a plan for a more universal Church/Parish Calendar.	19.0%	33.1%	121
Explore the possibility of a Church Playground and/or Nursery.	18.8%	49.2%	128

<b>Proposed completion within Three (3) Years</b>	<b>Selected 90 Days or 6 Months</b>	<b>Selected 3 Years or This is Not Important</b>	<b>Sample Size</b>
Be financially sound (in the black).	37.3%	24.6%	118
Using the Capital Campaign dollars we will have completed the following: major construction on the Church as proposed	32.5%	26.5%	117
Have a three year measure of Mass attendance, volunteerism and event participation.	30.4%	40.0%	125
Have increased St. Joseph's positive community image with non-Catholic churches.	25.6%	45.5%	121
Using the Capital Campaign dollars we will have completed the following: repair to current facilities.	14.7%	48.3%	116
Using the Capital Campaign dollars we will have completed the following: renovation of the current structure	7.6%	71.4%	105